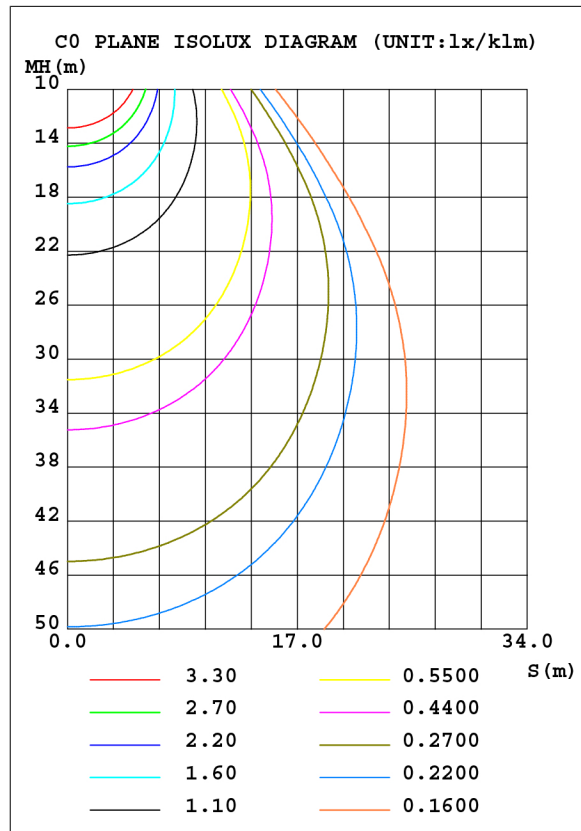
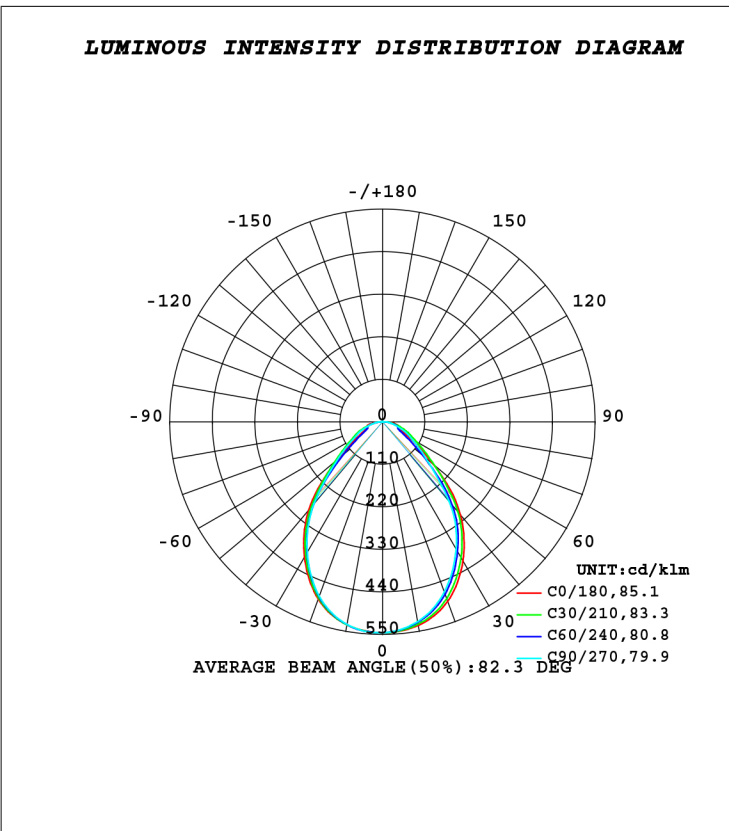


LUMINAIRE PHOTOMETRIC TEST REPORT

Test:U:221.06V I:0.1706A P:36.183W PF:0.9596 Freq:49.99Hz Lamp Flux:4384.09x1 lm		
NAME: LED PANEL LIGHT	TYPE:	WEIGHT:
SPEC.: 300x1200 36W	DIM.:	SERIAL No.:
MFR.: SHENZHEN GS LIGHT LIMITED	SUR.:	Shielding Angle:

DATA OF LAMP		PHOTOMETRIC DATA			
MODEL	GSP-312-36W	Imax (cd/klm)	545.5	S/MH (C0/180)	1.12
NOMINAL POWER (W)	36	LOR (%)	100.0	S/MH (C90/270)	1.09
RATED VOLTAGE (V)	220.0	TOTAL FLUX (lm/klm)	1000.0	η UP, DN (C0-180)	0.3,49.6
NOMINAL FLUX (lm)	4384.09	CIE CLASS	DIRECT	η UP, DN (C180-360)	0.2,49.9
LAMPS INSIDE	1	η up (%)	0.5	CIBSE SHR NOM	1.00
TEST VOLTAGE (V)	220.0	η down (%)	99.5	CIBSE SHR MAX	1.15



C Range: 0 - 360DEG
 C Interval: 30.0DEG
 Test Speed: HIGH
 Temperature: 25.3DEG
 Operators: 02
 Test Date: 2020-01-13

γ Range: 0 - 180DEG
 γ Interval: 1.0DEG
 Test System: EVERFINE GO-2000B_V1 SYSTEM V2.0.405.8
 Humidity: 65.0%
 Test Distance: 8.300m [K=1.0000]
 Remarks: