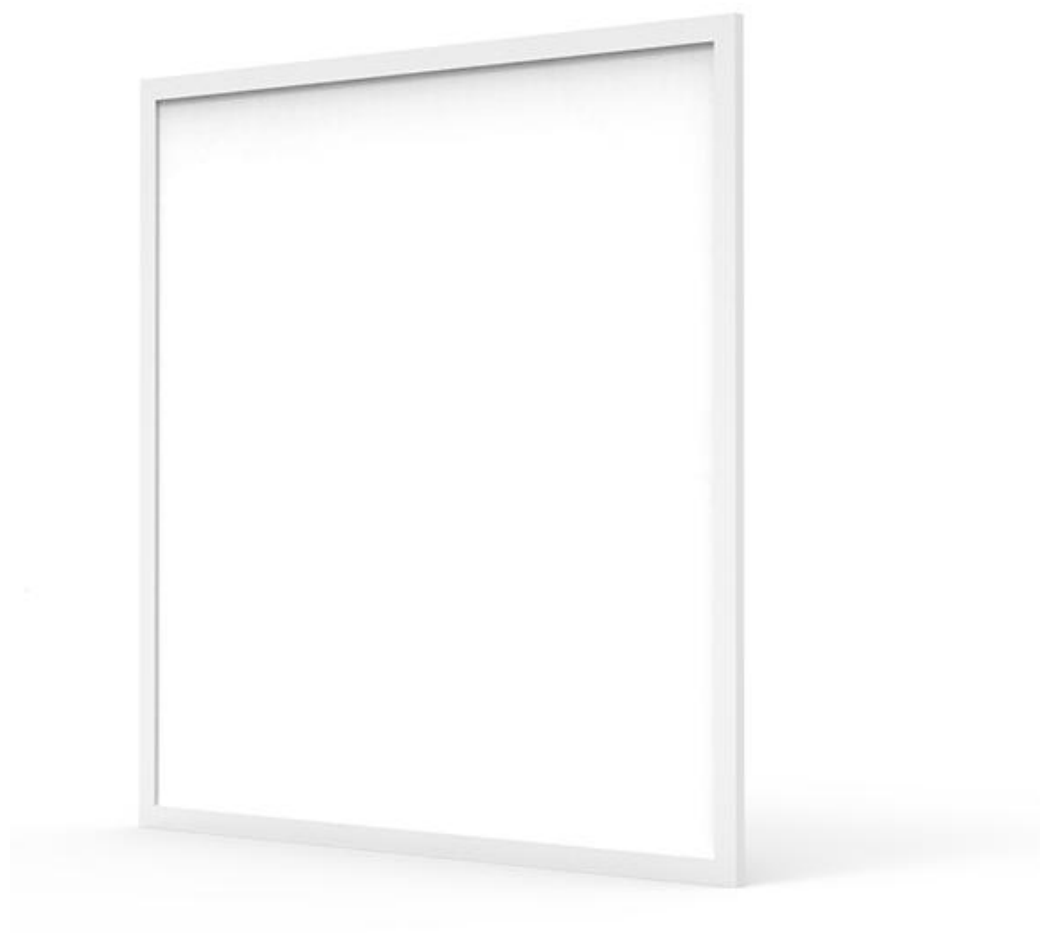


LED PANEL LIGHT



www.gslightled.com

Features

- Super slim design, High lumen output, high efficiency, energy saving up to 70%
- CE certificated, meet the requirements of UL SAA, VDE
- Imported light diffusion material, mercury and lead free
- Excellent heat dissipation structure, long lifespan, normal use can reach over 50,000 hours
- Lead free, eco-friendly, conform to the requirements of ROHS.
- Constant power consumption while input voltage in 200-240VAC.
- Instant start, no noise, no flickering.
- UGR<19 or CRI90 available and optional.
- DIMMING: 0-10V, PWM, DALI, TRIAC options.
- CCT Adjustable: Stepless adjustable color temperature 2700-6500k.
- RGB Control: RGB remote control options.
- With TUV-CE, SAA, RoHS certification for European
- IP grade: IP20 IP65 for options

Applications

- Office, meeting room, workshop, factories, warehouse.
- Hotel, supermarket, restaurant, schools, hospital, library, commercial lightings.

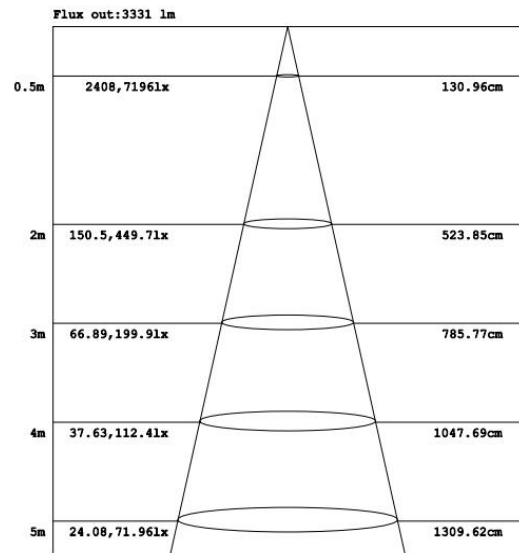
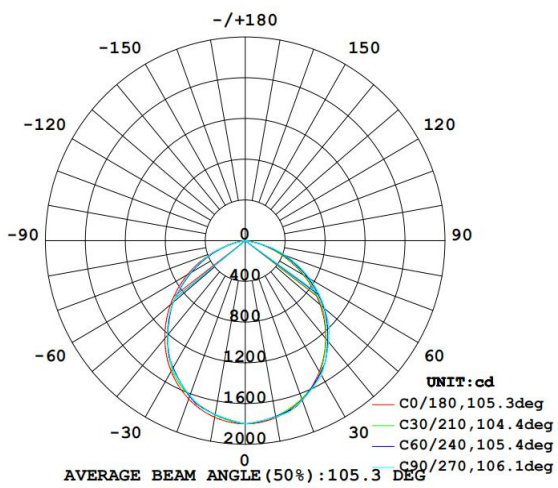


Specification

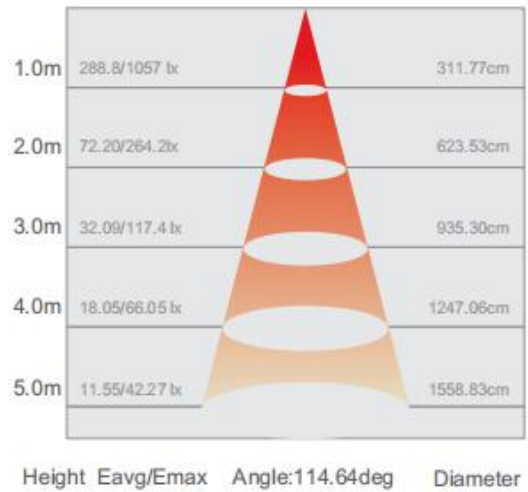
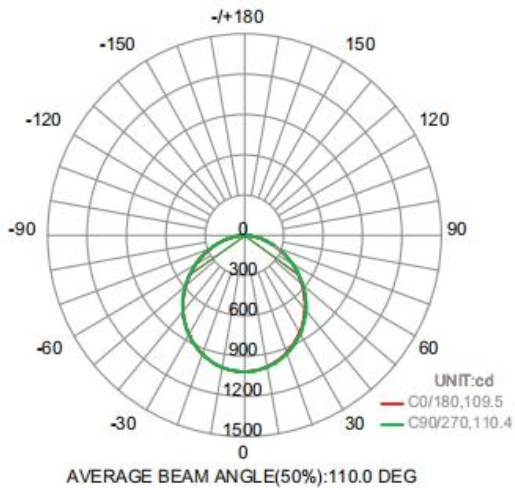
Model No	GSP-66-40W	GSP-6262-40W	GSP-312-40W	GSP-612-50W
Power	40W	40W	40W	50W
Dimension(mm)	595x595x9.5	620x620x9.5	295x1195x9.5	595x1195x9.5
LED Type	SMD2835			
Light Efficiency	100lm/w, 120lm/w, 135lm/w, 150lm/w			
Input Voltage	AC200-240V			
Driver	Philips free flicker			
Material	Aluminum + PMMA			
CRI	Ra80			
PF	>0.9			
CCT	3200k 4000k 5000k 5700k			
Working Temp	-40°C - + 50°C			
Beam angle	110°			
Life Span	50000Hours			
IP Rating	IP20			
Installation	Embedded, Suspended, Surface mounted, Spring clip			
Warranty	5 years warranty			
Packing size(mm)	700x720x220	720x730x220	400x1350x220	700x1350x150
Qty/Ctn	5pcs	5pcs	5pcs	3pcs
G.Weight	16.8kg	17.5kg	18.5kg	22.8



Photometric Diagrams



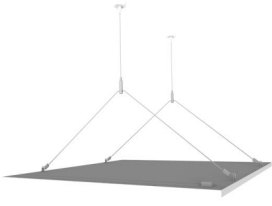
595*595*10



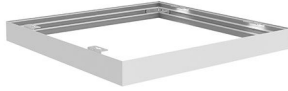
295*1195*10



Accessories



Hanging wire:



Aluminum frame

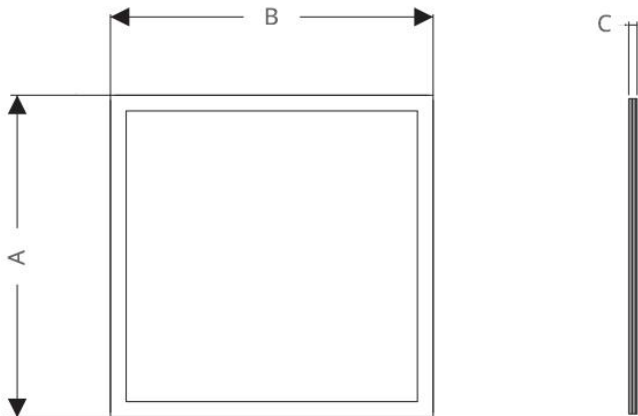


Spring clip



Wall mounting kit

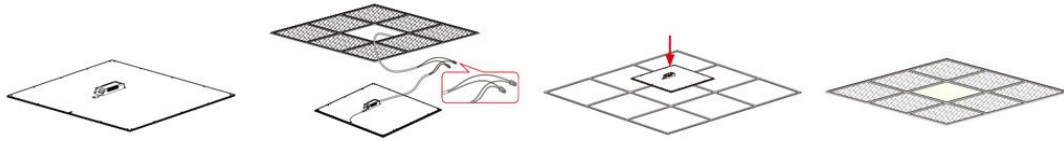
Dimensions



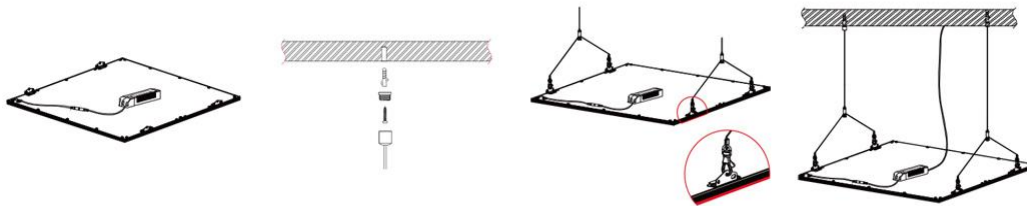
Product size(mm) A*B*C	LED Type	Power	Luminous efficiency	Warranty
595x595x10	SMD2835	36w 40w	100lm/w 120lm/w 135lm/w 150lm/w	5 years
620x620x10	SMD2835	40w		
295x1195x10	SMD2835	40W		
595x1195x10	SMD2835	50W		

Installation

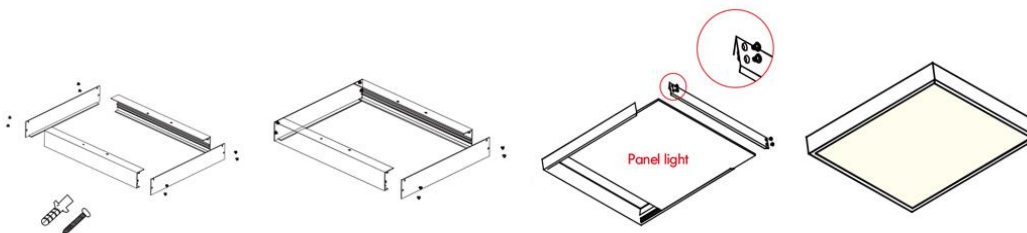
1. Embedded



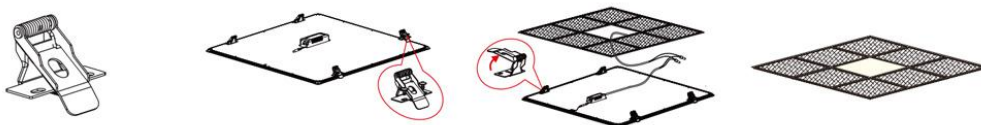
2. Suspended



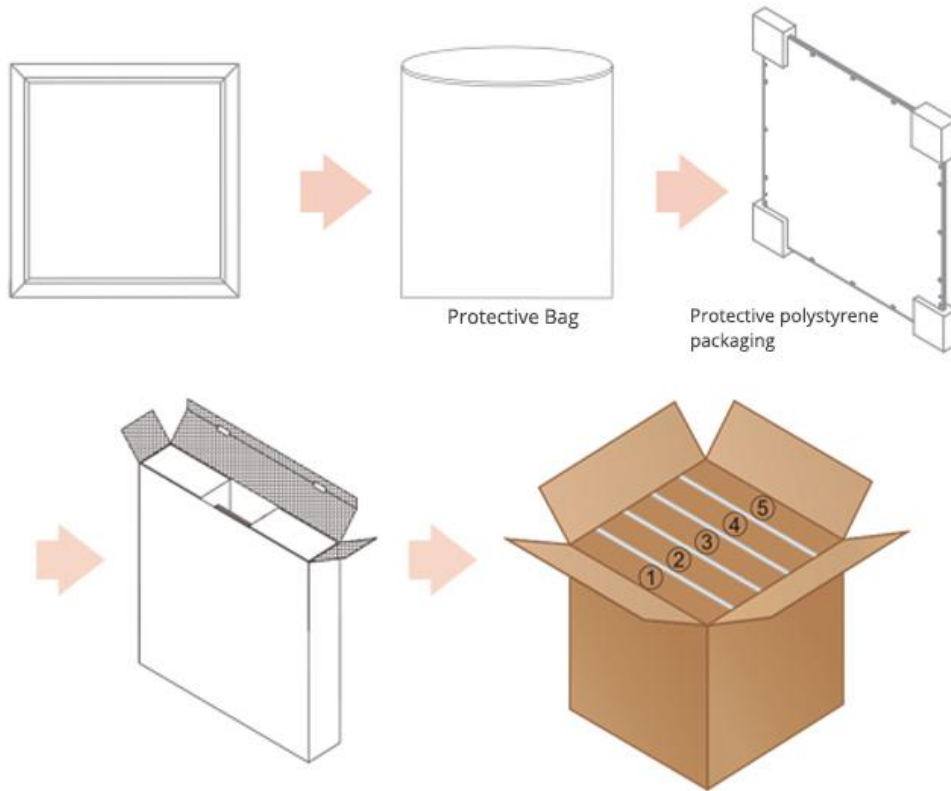
3. Surface Mounted



4. Spring Clip



Packaging



Product size(mm)	Qty/ctn	N.W.(kg)	G.W.(kg)	Carton size(mm)
595x595x10	5pcs	16	16.8	700x720x220
620x620x10	5pcs	16.5	17.5	720x730x220
295x1195x10	5pcs	17.5	18.5	400x1350x220
595x1195x10	3pcs	21.8	22.8	700x1350x150